

What is an Environmental Assessment (EA)?

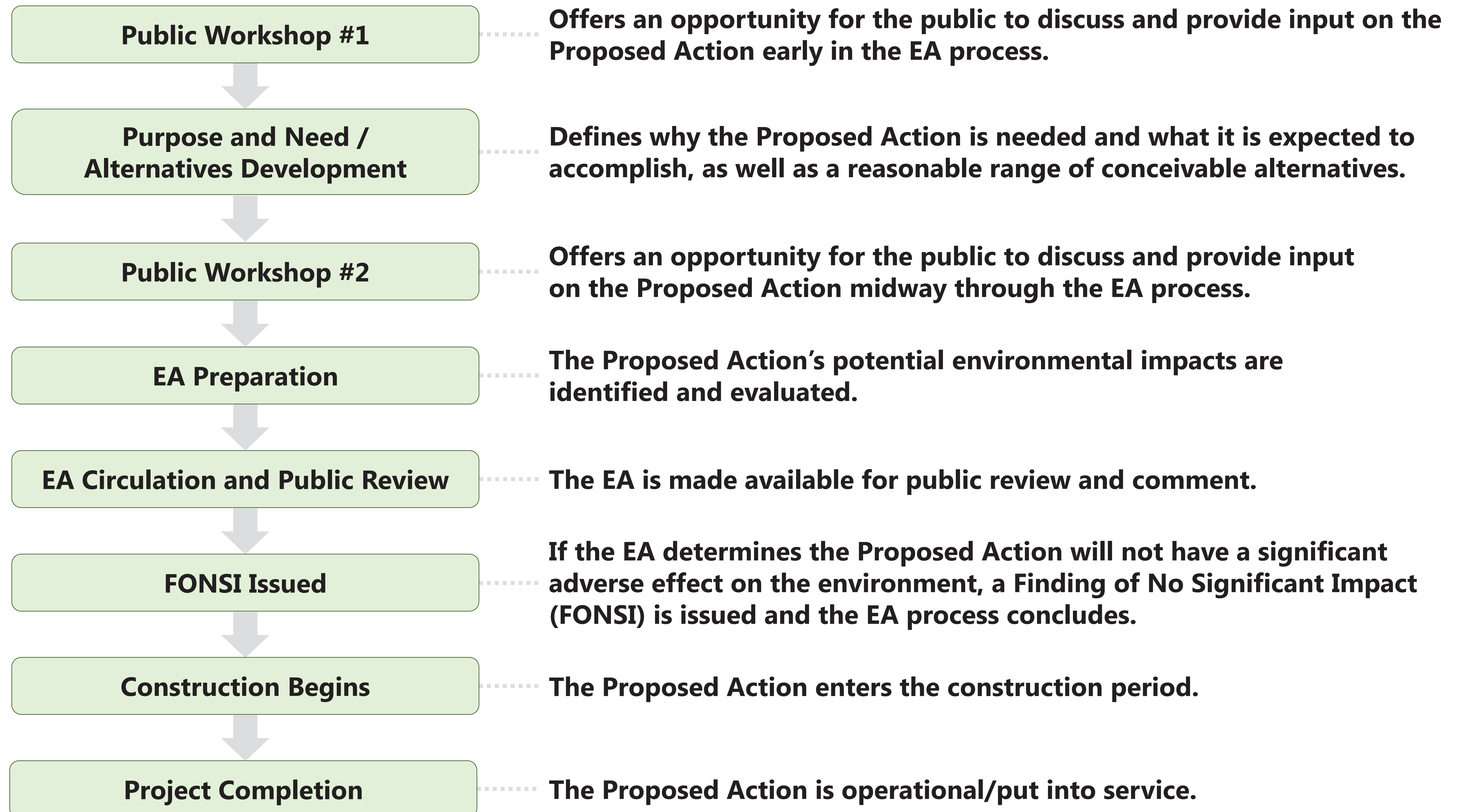
- ▶ A concise document that will identify and evaluate adverse environmental impacts of the Proposed Action, if any, for informed decision-making.
- ▶ Identifies the Proposed Action's purpose and need, as well as a reasonable range of conceivable alternatives.
- ▶ Describes mitigation measures, as necessary.
- ▶ A process that encourages public review and comment.

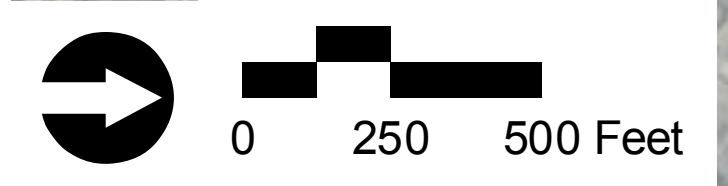


Examples of Environmental Resources Described and Evaluated in an EA:

- Wetlands
- Floodplains
- Biodiversity (wildlife, plants, and fish)
- Threatened & Endangered Species
- Air Quality
- Land Use
- Environmental Justice
- Socioeconomic Conditions
- Public Health & Safety
- Noise & Vibration
- Transportation
- Cultural Resources
- Parks and Recreation
- Solid & Hazardous Waste
- Greenhouse Gases/Climate Change

Environmental Assessment (EA) Process and Schedule





URI EDC, RIGIS

Source: RIDOT, RIGIS, City of Newport, VHB

Legend

- Municipal Boundary
- Neighborhood Boundary
- Parks and Open Spaces
- Noise Measurement Locations

Community Facilities by Type

- | | | |
|---|--|---|
| ● Child Day Care Services | ● Fire Protection | ● Post Office |
| ● Community Health | ● Multi-Purpose Community Center | ● Religious Institution |
| ● Educational Facility | ● Police Protection | ● Senior Living Facility |

Community Facilities and Noise Measurement Locations

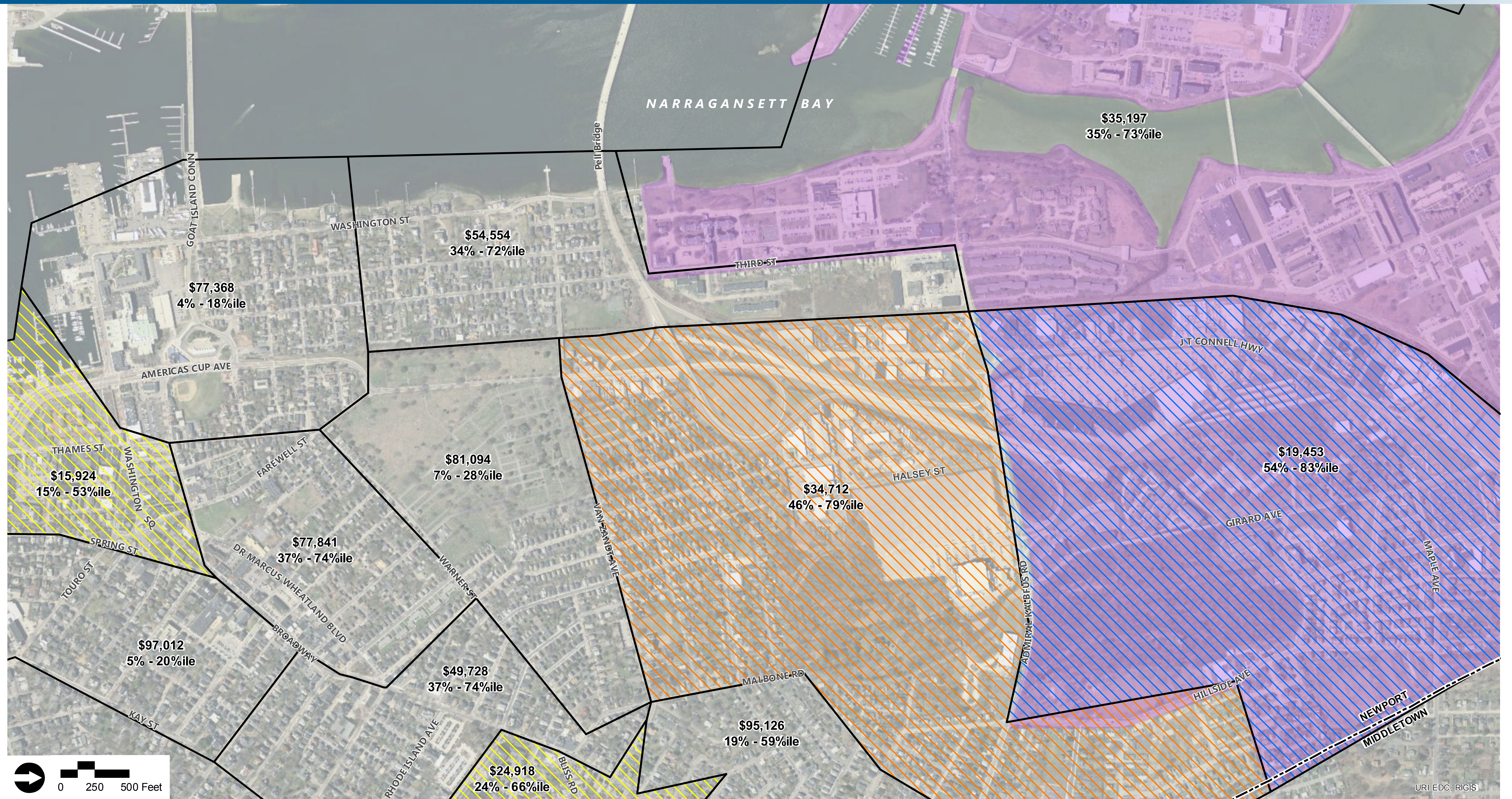


Source: RIDOT, RIGIS

Legend

- Municipal Boundary
- State Conservation Area
- Local Conservation Area

Conservation Areas



Source: RIDOT, RIGIS, US Census, 2011-2015 American Community Survey Data

Legend

□ Census Block Group Boundary

Census Block Group Information

\$34,712 ← Median Household Income
 46% - 79%ile ← Minority Percentage - Minority State Percentile

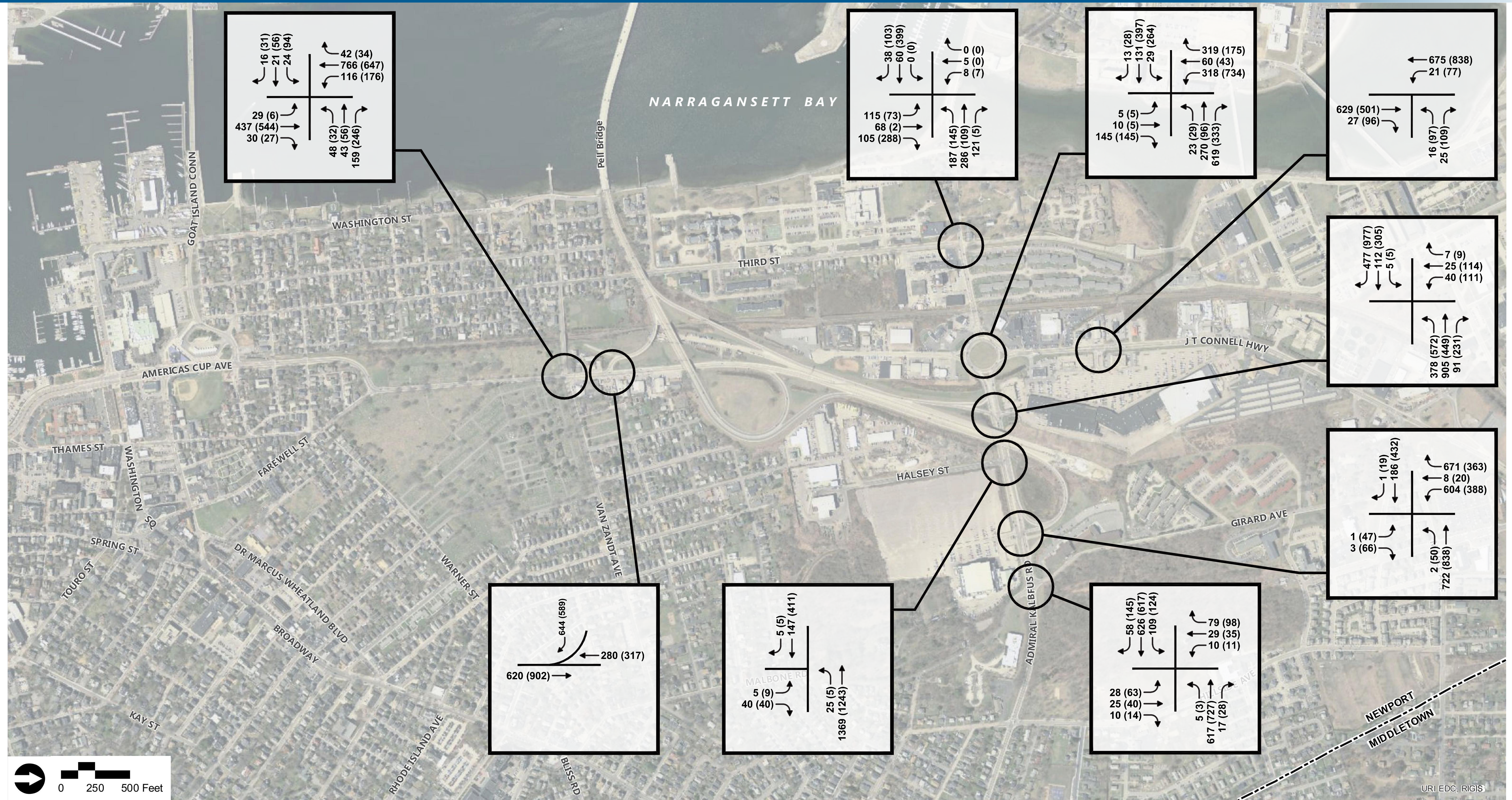
Environmental Justice Criteria Met

- ▨ Minority Alone
- ▨ Low-Income Alone
- ▨ Minority and Low-Income

▨ Environmental Justice Area (RIDEM)

--- Municipal Boundary

Environmental Justice



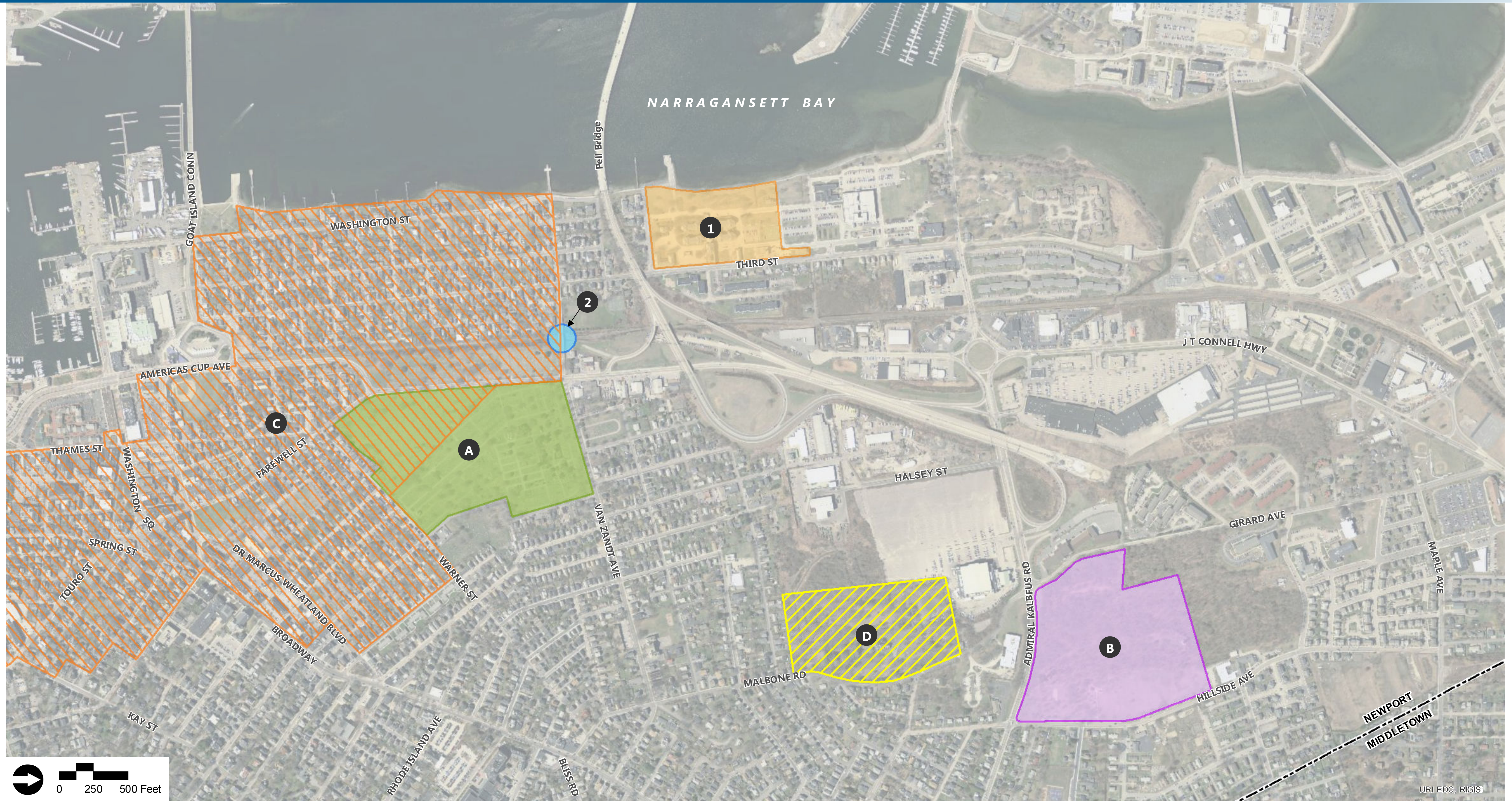
Source: RIDOT, RIGIS

Legend

--- Municipal Boundary

↑ Evening Volume
↓ Morning Volume

Existing Conditions Peak Hour Traffic Volumes



Source: RIDOT, RIGIS, National Register of Historic Places Database (NRHP Database), Historic American Building Survey (HABS)

Legend

Historic Properties Listed in the National Register

- A Common Burying Ground and Island Cemetery (NRIND)
- B Miantonomi Memorial Park and WW1 Memorial Tower (NRIND)
- C Newport Historic District (NHL)
- D Malbone (NRIND & HABS)

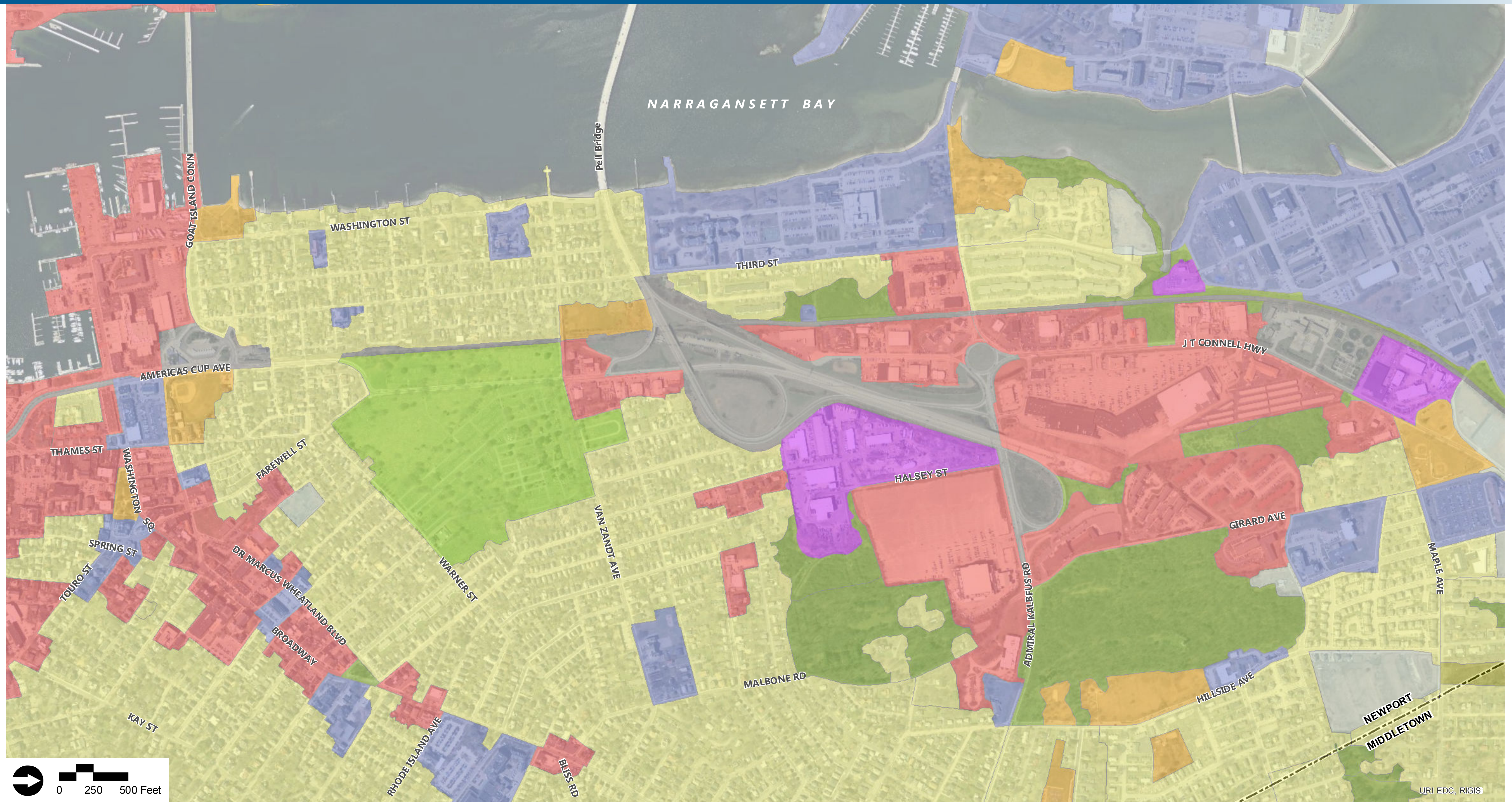
Properties Found Eligible for Listing in the National Register

- 1 Third Street Naval Hospital Historic District (CDOE)
- 2 Van Zandt Avenue Historic RR Bridge (CDOE)

--- Municipal Boundary

- NRIND National Register of Historic Places, Individual
- NHL National Historic Landmark
- CDOE Consensus Determination of Eligibility
- HABS Historic American Building Survey

Historic Resources



Source: RIDOT, RIGIS

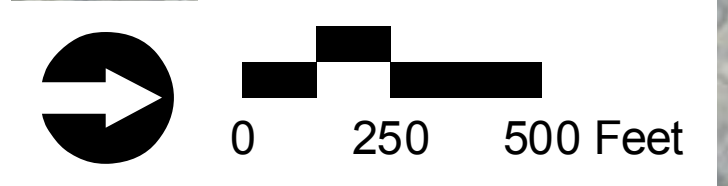
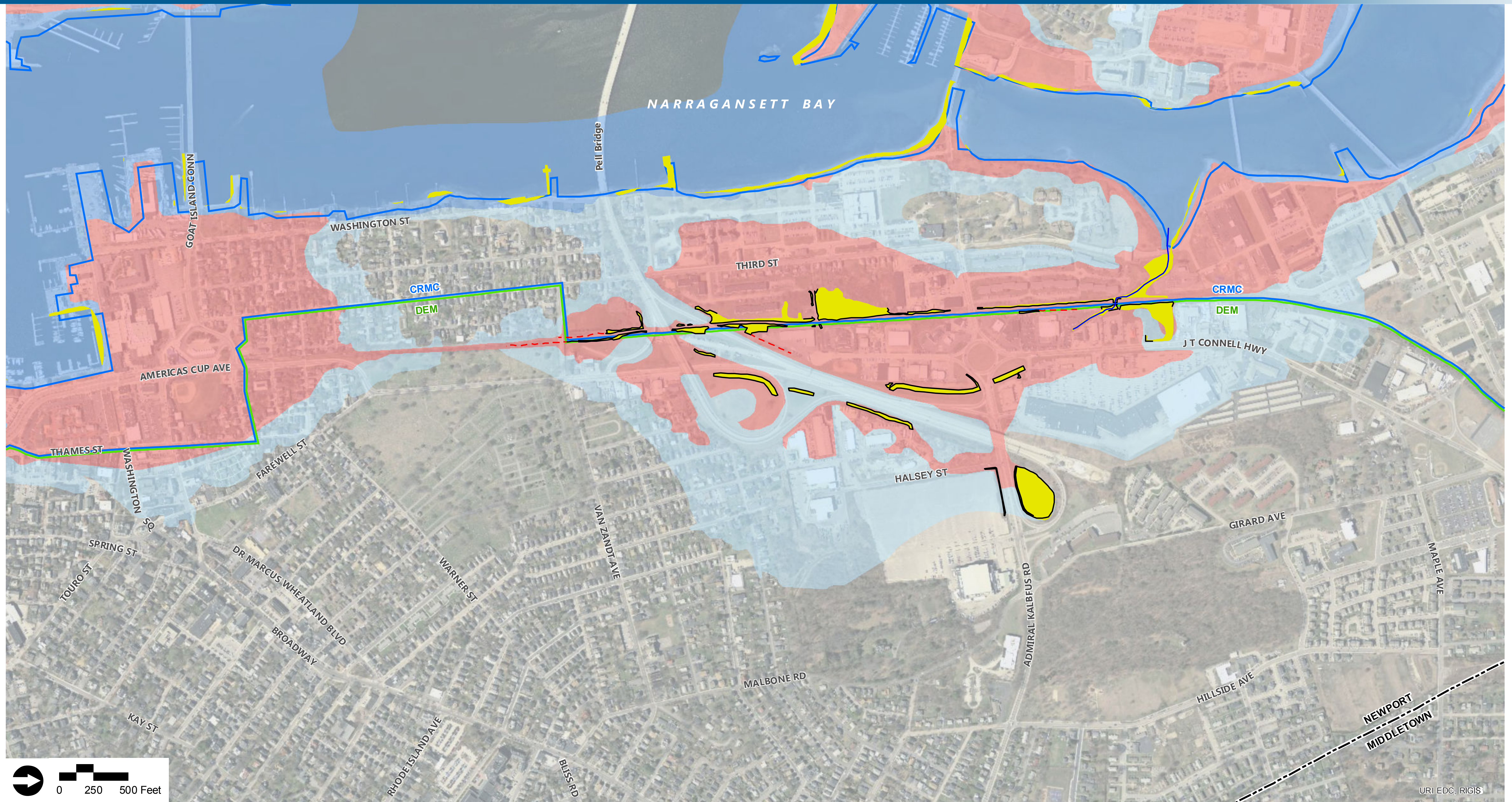
Legend

--- Municipal Boundary

Land Use

- | | |
|--|---|
| Residential | Agricultural |
| Commercial and Mixed-Use | Institutional |
| Industrial | Forest |
| Transportation and Utilities | Cemeteries |
| Recreation | Open and Vacant Land |

Land Use



URI EDC, RIGIS

Source: RIDOT, RIGIS, VHB 2017 Field Investigation

Legend

--- Municipal Boundary

Delineated Wetlands

— Delineated Wetland Edge

- - - Ditch/Area Subject to Storm Flowage

— Unnamed Stream Channel

Wetland Area

Wetlands Jurisdiction

— Rhode Island Coastal Resources Management Council (CRMC)

— Rhode Island Department of Environmental Management (DEM)

Flood Hazard Zone

AE: 1% Annual Chance Flood Zone

VE: 1% Annual Chance Coastal Flood Zone with Velocity Hazard

X: 0.2% Annual Chance Flood Zone

Wetlands and Waterways